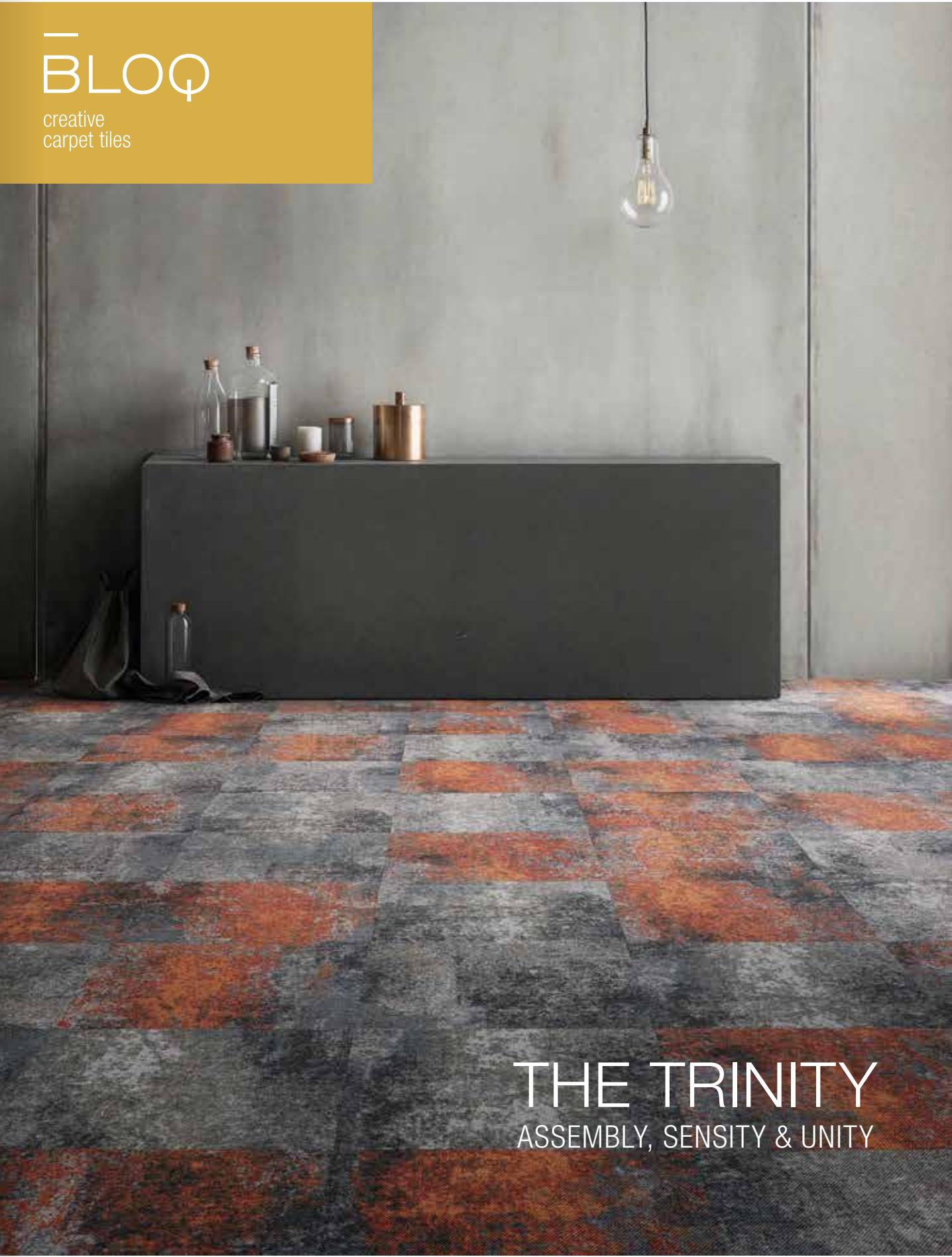


—
BLOQ

creative
carpet tiles



THE TRINITY

ASSEMBLY, SENSITIVITY & UNITY

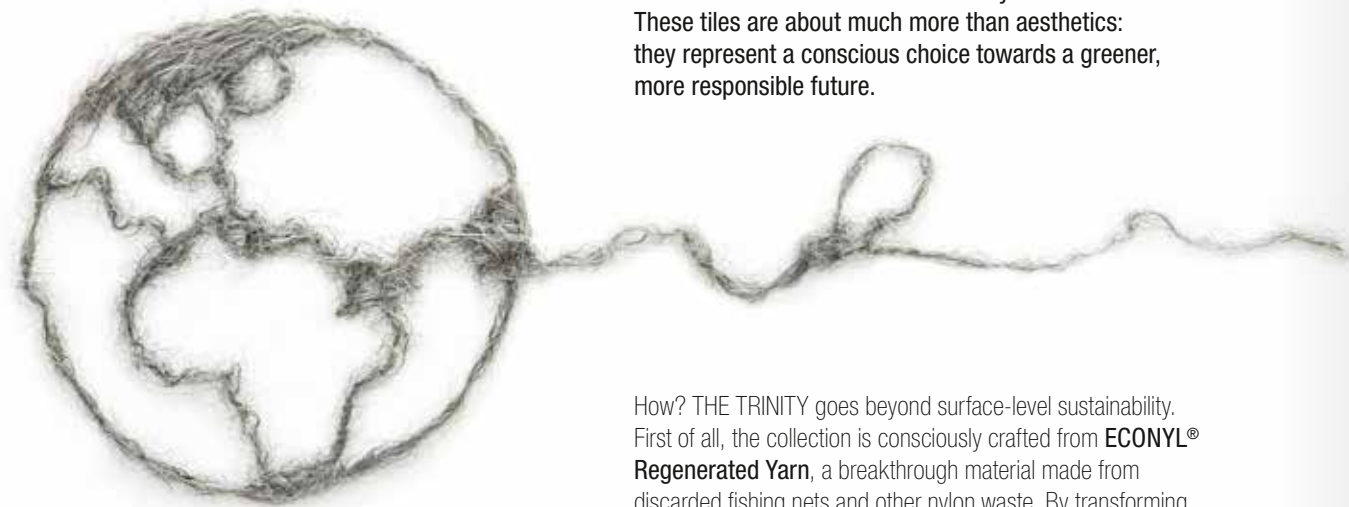
THE TRINITY towards a better future for people and planet

THE TRINITY collection is a revolutionary line of carpet tiles with innovation and sustainability at its core. These tiles are about much more than aesthetics: they represent a conscious choice towards a greener, more responsible future.

How? THE TRINITY goes beyond surface-level sustainability. First of all, the collection is consciously crafted from **ECONYL® Regenerated Yarn**, a breakthrough material made from discarded fishing nets and other nylon waste. By transforming ocean pollutants into high-quality carpet fibres, we reduce our environmental footprint and protect the oceans.

Additionally, its unique **RELAX Cushion Backing** is made from recycled mattresses, making use of resources that otherwise would have gone to waste. Furthermore, THE TRINITY carpet tiles carry the **CO2 Neutral Label**, highlighting our commitment to offset our Carbon Footprint.

But that's not all – thanks to its unique RELAX Cushion Backing made from recycled mattresses, THE TRINITY goes beyond just being an eco-conscious product. It's also designed with people in mind. Our cushion-backed carpet tiles offer an exceptionally **soft, luxurious underfoot feel**, proven to be relaxing, while also delivering **superior acoustic performance**. This makes spaces noticeably quieter, fostering better collaboration and concentration in a relaxing environment.



SUSTAINABLE

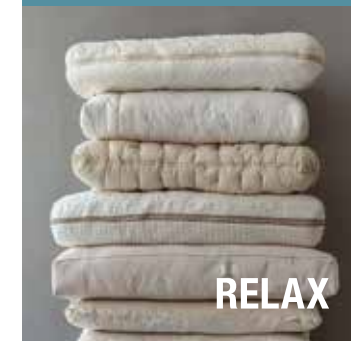
ECONYL®
100%
Regenerated
Yarns

p.04



RELAX
Cushion
Backing

p.05



CO2
Neutral
Label

p.06



COMFORT

Acoustics

p.08



Well being

p.10



COLLECTION

THE TRINITY
comes
in three styles

p.14

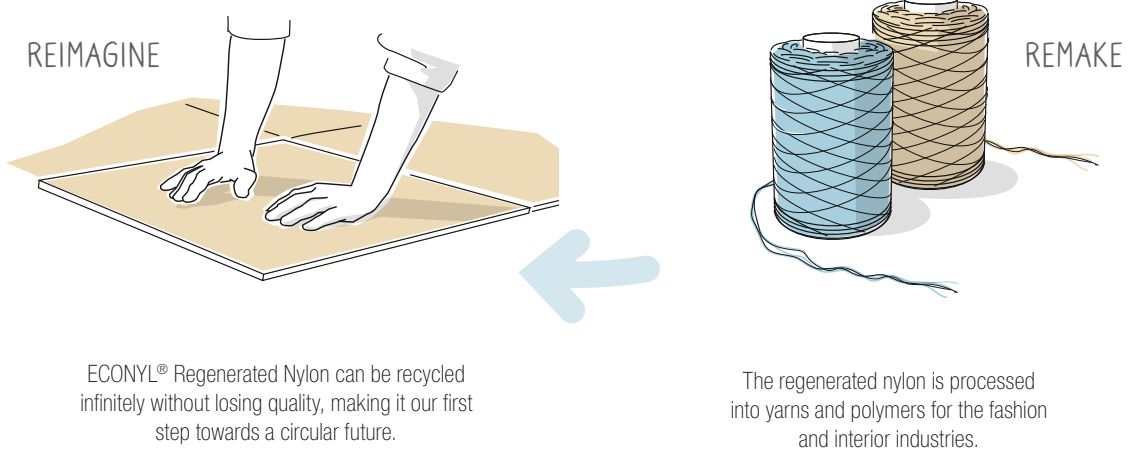
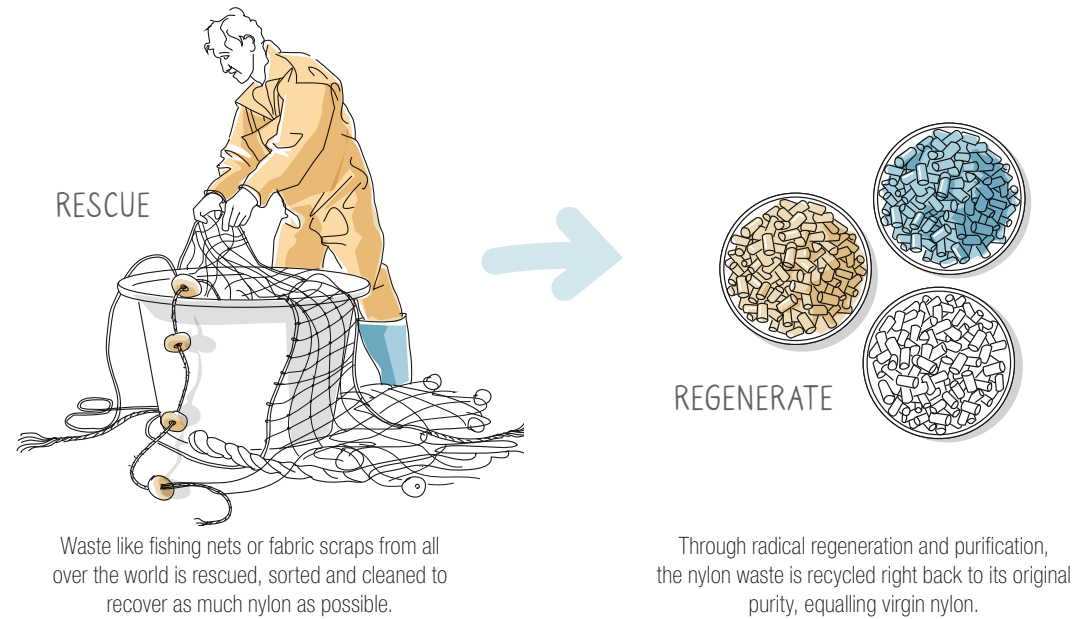
ASSEMBLY
p.16

SENSITY
p.24

UNITY
p.30

ECONYL®
100%
Regenerated
Yarns

The ECONYL® Regeneration System



SUSTAINABLE

RELAX
Cushion
Backing



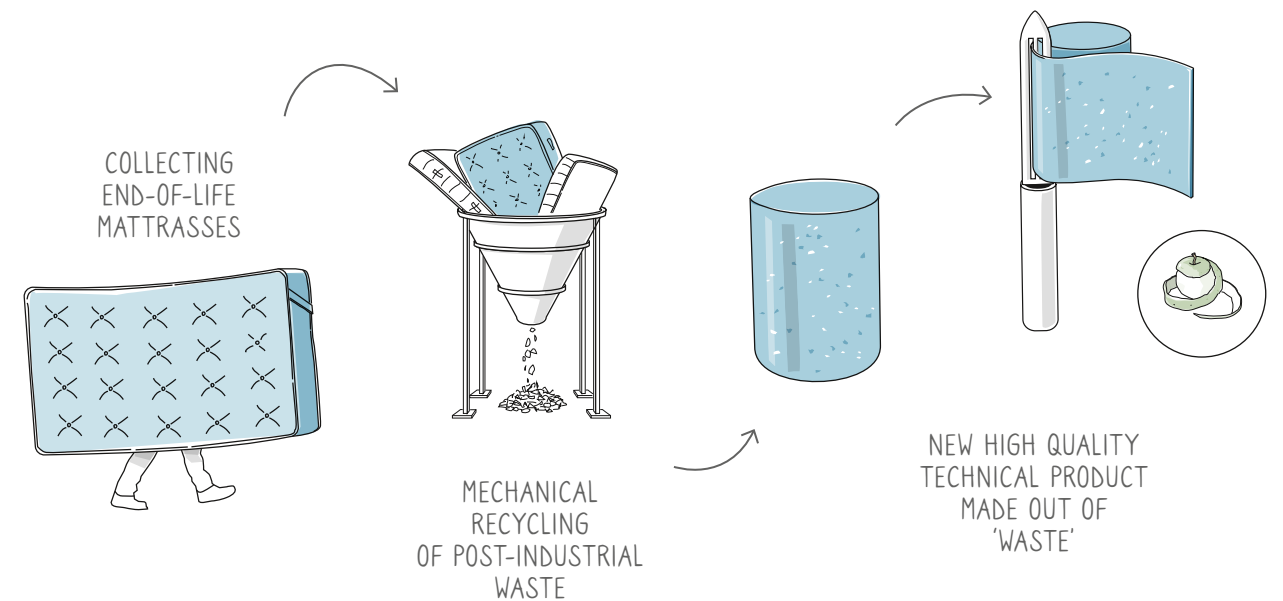
RELAX Cushion Backing

THE TRINITY's unique composition tile backing breathes new life into old mattresses with the innovative **RELAX Cushion Backing**. End-of-life mattresses are collected, cut up and blended with other raw materials. This mixture is then moulded into new blocks of material, which are then sliced into sheets of RELAX Cushion Backing.

This innovative backing **improves walking comfort, enhances acoustic properties** and increases the durability of the tile, making yet another part of the carpet tile more sustainable.



How we produce our RELAX Cushion Backing



CO2 Neutral Label

BLOQ has agreed to purchase Carbon Offsets through GreenEnergy GPO, LLC (GEGPO). The following will be purchased and retired on behalf of BLOQ.

Carbon Standard	Project Type	Nr.	Location	Project Name
VERRA	Improved Forest Management	VM00012	Romania	Silvador Climate Action Project



**CARBON
OFFSETTING
THAT ACTUALLY
DELIVERS.**

CARBON NEUTRAL PRODUCT

The time to take bold climate action is now. That's why BLOQ has set **ambitious emission reduction targets**. To track our efforts, we rely on certification systems. However, many of these systems don't differentiate between companies just starting out and those already making significant progress, and their criteria are not always verified by an independent and reliable third party.

To address these issues and to ensure neutrality and transparency, the **CO2 Neutral label** was developed. This label recognizes every step organisations take to minimise their environmental impact and makes these efforts visible to the public. It is validated by Vinçotte, an independent and recognized certification body.

The project through which we aim to reduce greenhouse gas emissions is the **Silvador Climate Action Project**, a forest carbon credit initiative. By preserving 1,538 hectares of privately owned forest in Romania's Subcarpathians, mainly consisting of oak, beech, and hornbeam trees, we expect to achieve an estimated reduction of 375,552 metric tonnes of CO2 equivalent.

Acoustics

HEALTH & WELL-BEING

Noise can be disruptive and often leads to stress, negatively impacting both mental and physical health. In noisy workplaces, absenteeism tends to rise. In hospitality environments, excessive noise undermines the very goal of providing rest and relaxation.

REDUCES IMPACT SOUND (ΔL_w)

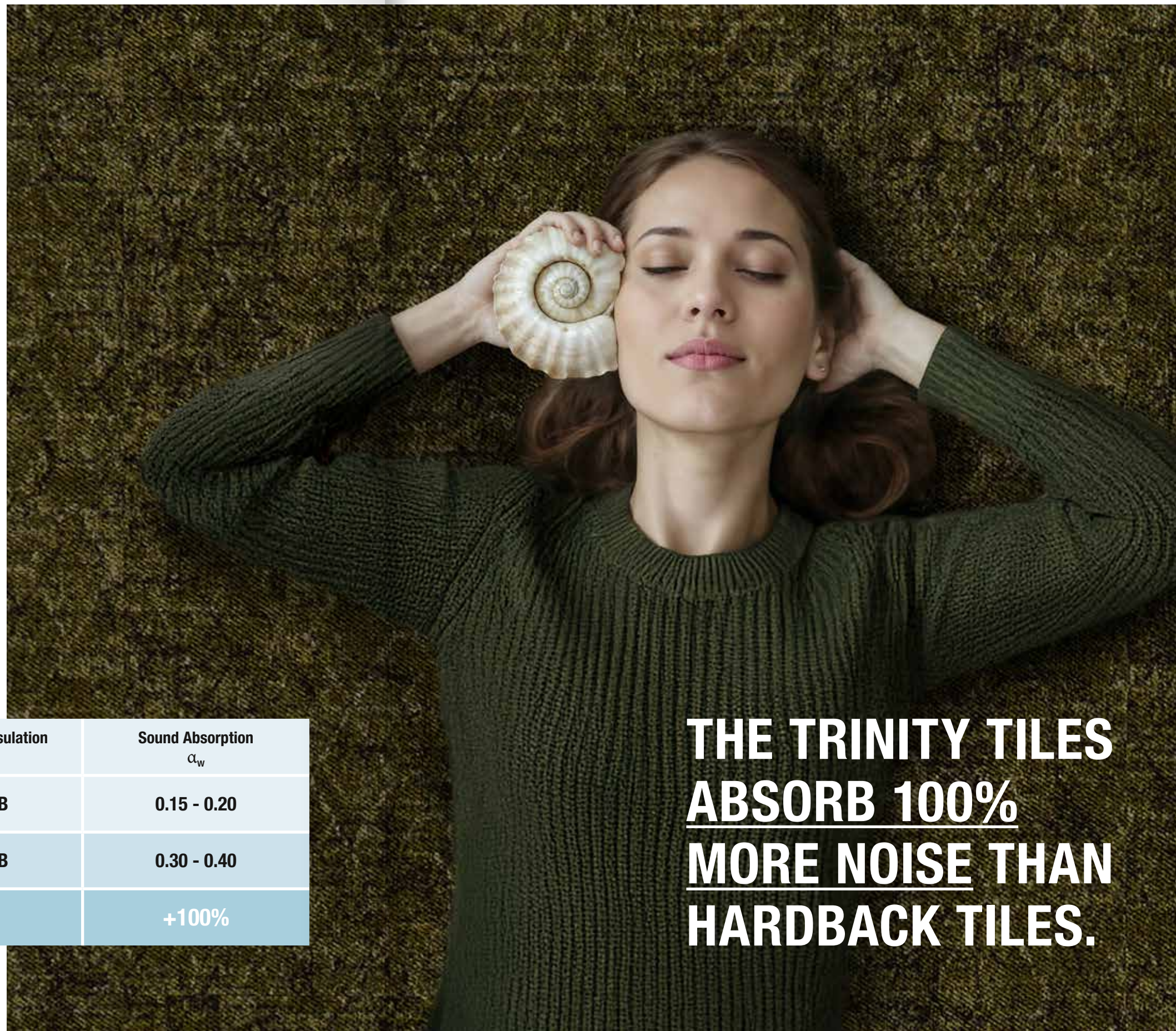
Impact sound insulation refers to a material's capacity to minimize the transfer of noise caused by impacts, such as footsteps or dropped objects, between different spaces, typically across floors in a building. Thanks to its **great impact sound reduction**, THE TRINITY carpet tiles minimise the transfer of vibrations and reduce noise transmission.

SOUND ABSORPTION (α_w)

Sound absorption is the process by which materials absorb sound energy rather than reflecting it, like when curtains are hung in a room to reduce the echo. Materials with sound-absorbing properties are often used in architectural design to reduce noise levels and improve the acoustics of a space, making for a more relaxing environment. Carpet tiles are a **perfect sound-absorbing material**. Carpet tiles with RELAX Cushion Backing score even better.

	Impact Sound Insulation ΔL_w	Sound Absorption α_w
Standard Polyamide Carpet Tiles with Bitumen Backing	20 - 25 dB	0.15 - 0.20
Polyamide Carpet Tiles with RELAX Cushion Backing	30 - 40 dB	0.30 - 0.40
	+55%	+100%

**THE TRINITY TILES
ABSORB 100%
MORE NOISE THAN
HARDBACK TILES.**



Well being

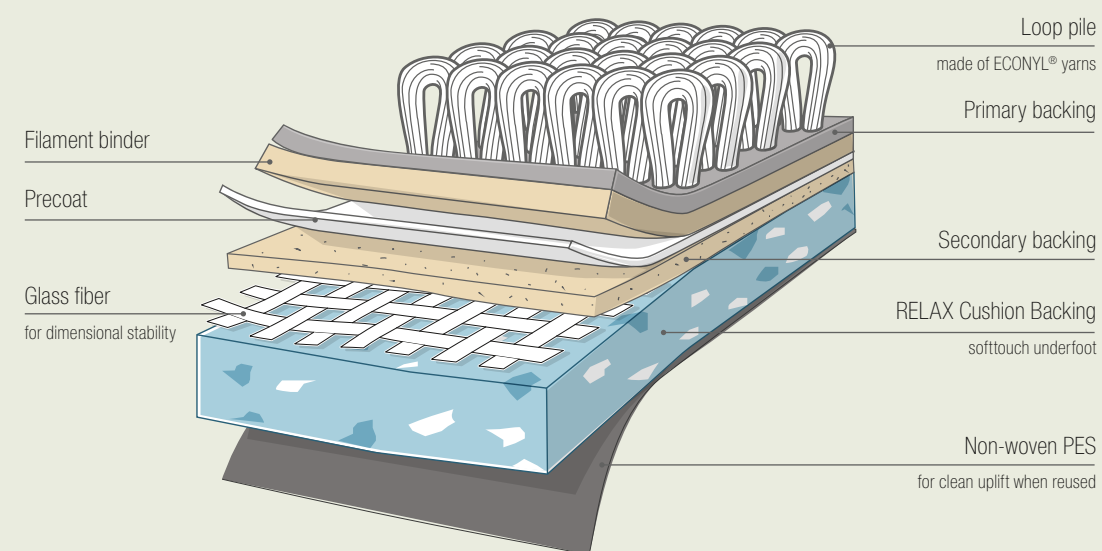
**WALKING ON
A SOFT FLOOR
IS GENTLER ON
OUR FEET, KNEES,
AND BACK.**

SOFTTOUCH UNDERFOOT

The RELAX Cushion Backing of THE TRINITY provides an exceptionally soft and **luxurious feel underfoot**, enhancing both comfort and atmosphere. Soft carpet tiles are gentler on our feet, knees, and back compared to other flooring types, and have even been shown to lower stress.

That is why this premium carpet tile not only adds a cosy touch but also contributes to **a healthier environment** and a refined and upscale aesthetic, making it ideal for elevating office environments or offering hotel guests a warm, inviting welcome.

THE TRINITY CROSS-SECTION



BLOQ
creative
carpet tiles

RECYCLED CONTENT

ECONYL
REGENERATED NYLON

100%
Regenerated
Yarns

RELAX

100%
Recycled
Backing

CO2 NEUTRALITY

0%
Carbon Footprint



THE TRINITY COLLECTION ISN'T JUST A FLOORING SOLUTION.

IT'S A STATEMENT.

A COMMITMENT TO SUSTAINABILITY, INNOVATION, AND COMFORT.

WELL BEING

Luxurious
Soft
Flooring



ACOUSTICS

Impact
Sound Reduction

+10 dB

Sound
Absorption

+0.15 α_w



THE TRINITY

ASSEMBLY, SENSITY & UNITY

THREE STYLES

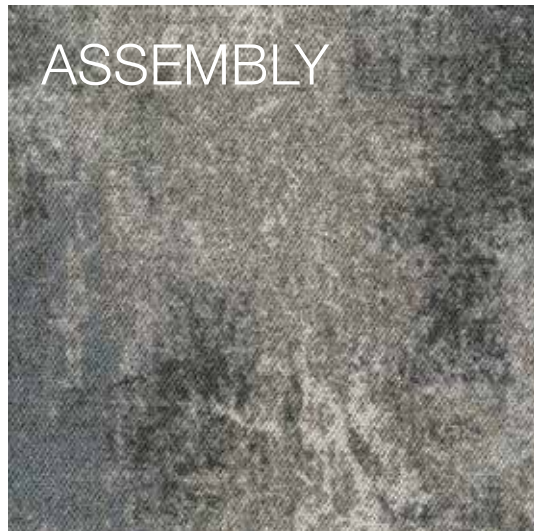
ASSEMBLY draws inspiration from the rugged texture of weathered concrete, evoking the raw beauty of abandoned urban spaces.

SENSITY is an ode to the intricate patterns of grained marble and the cracks in glazed stone, blending the untamed essence of nature with a timeless, neutral colour palette.

UNITY offers a subtle industrial vibe with its light geometric pattern, adding structure and warmth through a rich and intriguing colour range.



Marble stones



Inspiration is everywhere



Fishing nets

Tangible concrete



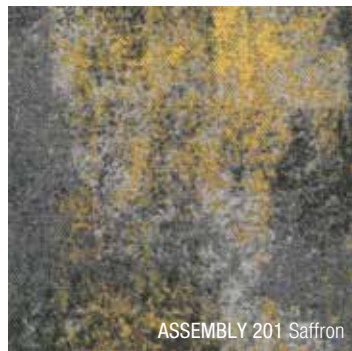
ASSEMBLY

ASSEMBLY captures the characterful essence of abandoned urban spaces, with the rugged texture of weathered concrete at its core. The name reflects the countless ways you can combine the different colours and designs to create a unique floor. It's perfect for adding an industrial touch to cold or sterile spaces, bringing a vibrant urban vibe with the tough look of concrete and the comfort of carpet tiles.

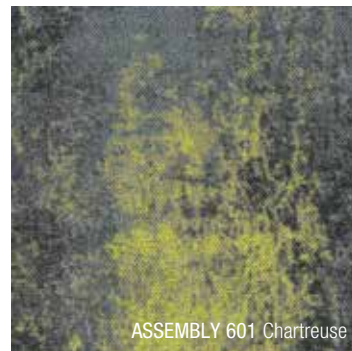
Available in **six matching colourways** – Saffron, Chartreuse, Aquamarine, Vermillion, Cement, and Iceblue – Cement serves as the base tone, making it easy to mix and match with the other colours.



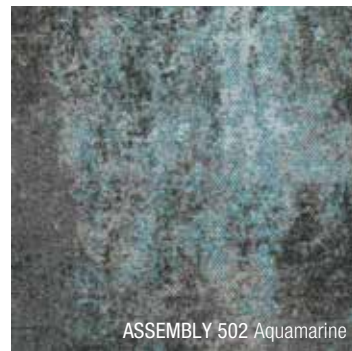
↑
EACH CARPET TILE
VARIES IN DESIGN



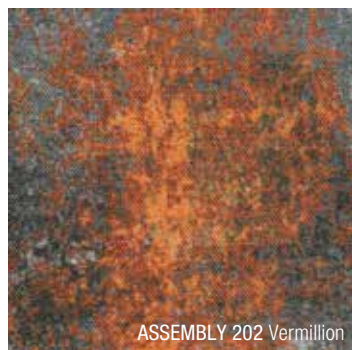
ASSEMBLY 201 Saffron



ASSEMBLY 601 Chartreuse



ASSEMBLY 502 Aquamarine



ASSEMBLY 202 Vermillion



ASSEMBLY 901 Cement



ASSEMBLY 501 Iceblue



ASSEMBLY 901



ASSEMBLY 201, 601, 901



ASSEMBLY 201, 901



ASSEMBLY 202, 901

Pick & play

Each colour in the ASSEMBLY collection has design variations: A, B, C and D. By mixing and rotating the different tiles in different ways, you get an endlessly varying floor pattern, where you control the level of vibrancy.

A	A	C	B
B	D	C	D
A	A	D	D
C	B	C	B



Endless possibilities of placing the tiles

ASSEMBLY 202, 901



ASSEMBLY 501, 502, 901



ASSEMBLY 501, 901

SENSITY

SENSITY is inspired by the distinctive veins in natural stone, the cracks in deep blue polar ice, and the aged patina of glazed surfaces. With its neutral colour palette, this collection exudes a classic, chic elegance. It brings to mind the grandeur of majestic palaces with their luxurious marble floors, but with the added comfort of carpet tiles.

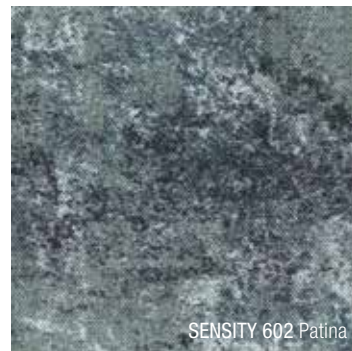
SENSITY is available in **four classic colourways**: Deep Sea, Patina, Pietra Grey, and Grey Marble. Each colour offers four different tile variations, allowing you to create realistic and sophisticated patterns.



↑
EACH CARPET TILE
VARIES IN DESIGN



SENSITY 503 Deep Sea



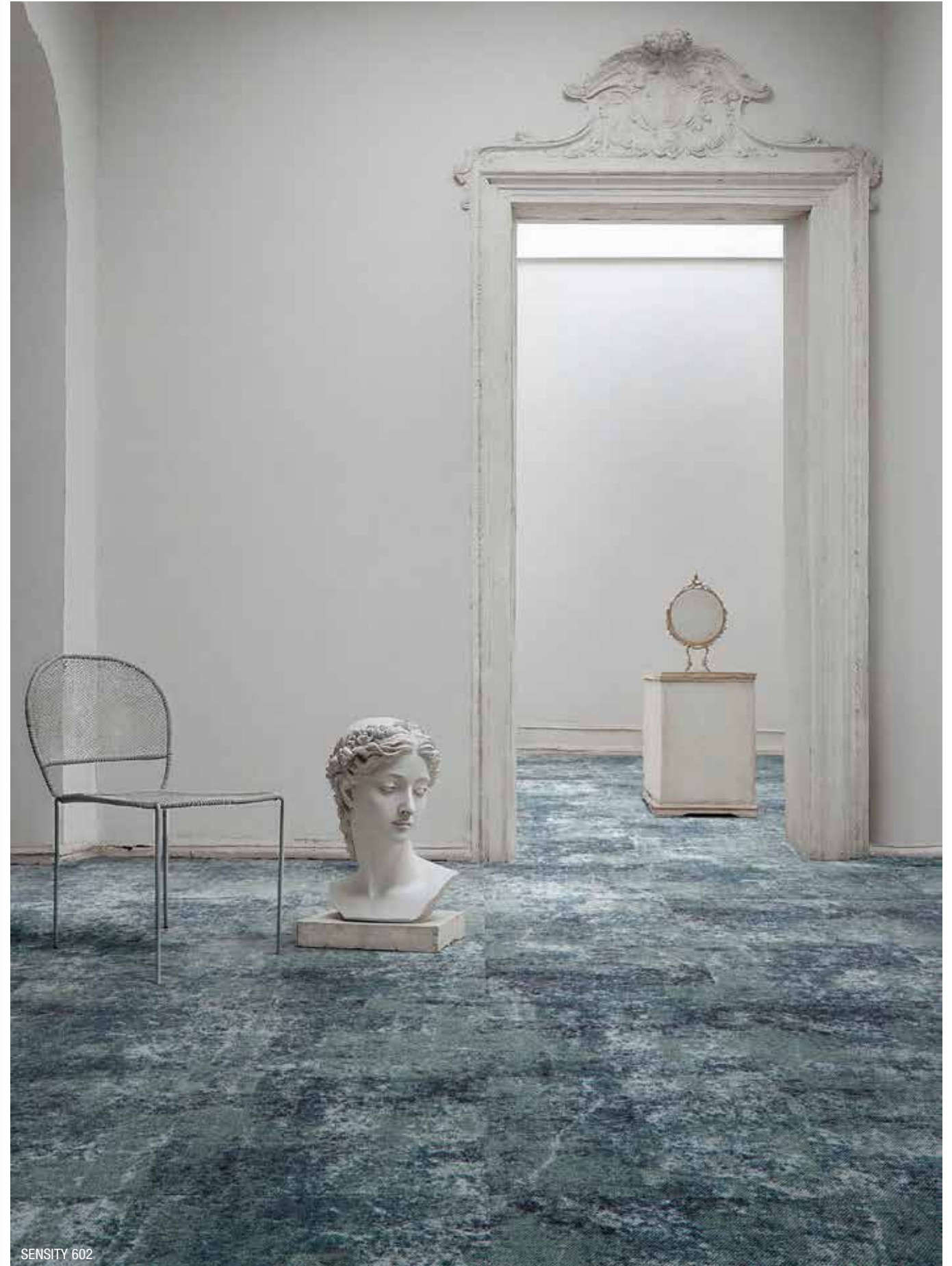
SENSITY 602 Patina



SENSITY 902 Pietra Grey



SENSITY 903 Grey Marble



SENSITY 602



SENSITY 503

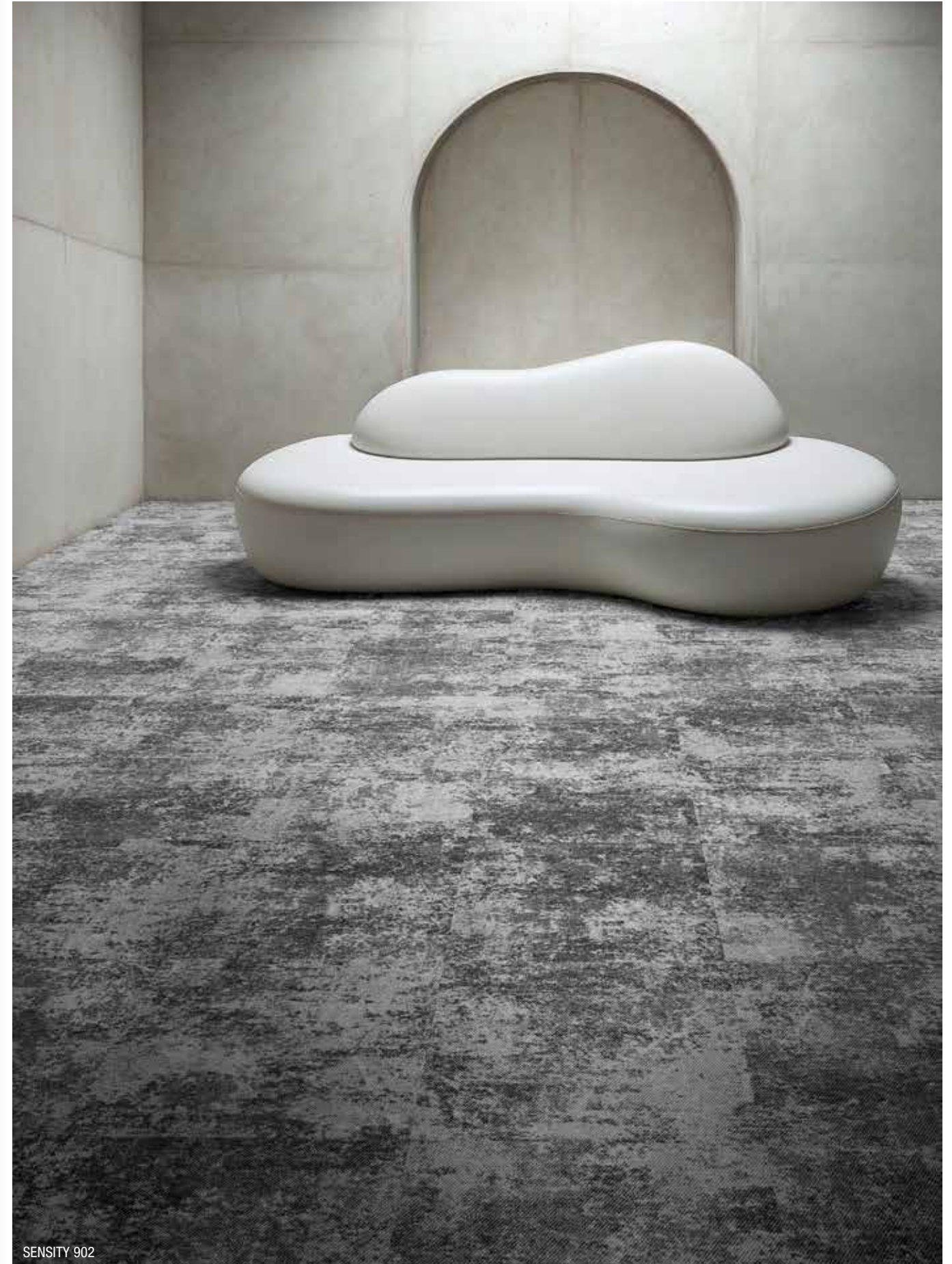
A classic beauty

The beauty of nature is timeless. SENSITY suits both classic interiors with vintage furniture as well as modern, sleek spaces. For a tactile class, giving the room character and setting the scene, without taking all the spotlight. Just like nature.



What if we could make marble soft?

When you want the classy look of a marble floor, but you don't want a cold and hard look, SENSITY is the perfect pattern. Pietra Grey, for example, is reminiscent of natural stone but has the supreme acoustic qualities and pleasant walking comfort of carpet tile, making any room much cosier and welcoming.



UNITY

The inspiration for UNITY comes from repetitive patterns like chainlink and fishing nets, giving it a business-like edge that's made more original and inviting through its thoughtful colour selection. This warmth is evident in the **six colourways**: Golden Ecrú, Crimson, Oxford Blue, Lichen, Old Zinc, and Blue Grey. Old Zinc serves as a versatile base, blending seamlessly with the other colours. Each colour is available in four different variations, offering endless possibilities for creative combinations.



↑
EACH CARPET TILE
VARIES IN DESIGN



UNITY 203 Golden Ecrú



UNITY 302 Crimson



UNITY 504 Oxford Blue



UNITY 603 Lichen



UNITY 904 Old Zinc



UNITY 905 Blue Grey



UNITY 203



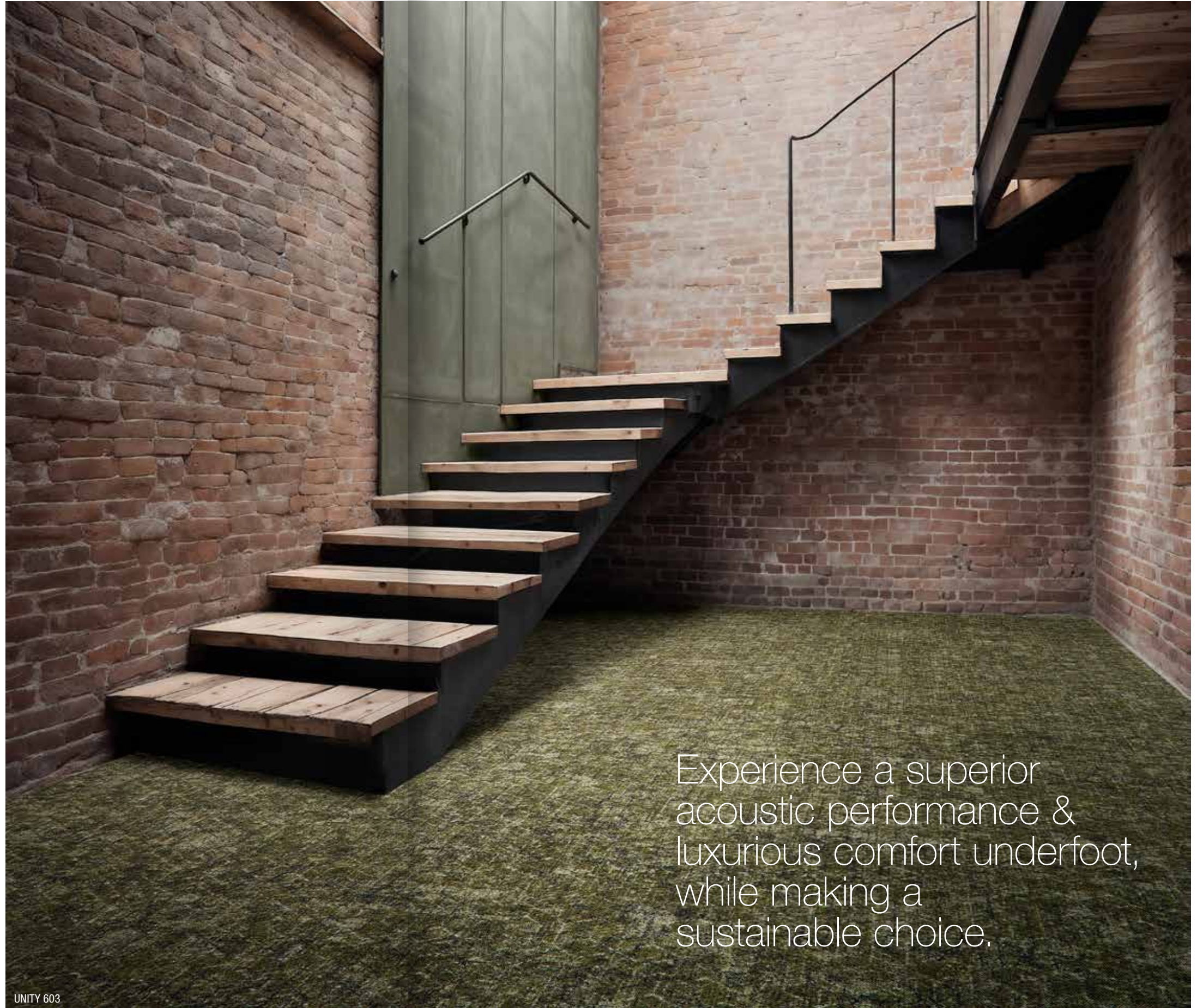
UNITY 504



UNITY 504

The best of both worlds

UNITY combines the best features of different flooring types into a perfect blend. The repetitive patterns of UNITY create a serene ambiance, much like a classic tiled floor, but with a soft touch. You retain the rhythmic design while enjoying an acoustic solution that feels comfortable underfoot.



Experience a superior
acoustic performance &
luxurious comfort underfoot,
while making a
sustainable choice.

UNITY 603

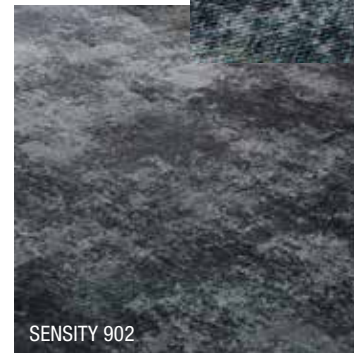
Mix & match

Although the three product lines each have their own character, you can combine them seamlessly within the same project, thanks to the consistency in colours. Make your floor unique by combining the colours and tiles as you wish.

ASSEMBLY



SENSITY



UNITY



Specifications

LIGHT REFLECTANCE VALUES

Light Reflectance Value (LRV) is a scale that measures visible and usable light reflected from an illuminated surface. The percentage identifies how much light a colour reflects or absorbs. 0% reflects no visible light, 100% reflects all light.

ASSEMBLY

COLOUR	LRV _{av}	L
201	16.32	47.40
202	11.14	39.81
501	19.17	50.88
502	17.82	49.28
601	13.66	43.75
901	12.15	41.46

SENSITY

COLOUR	LRV _{av}	L
503	13.23	43.11
602	14.83	45.40
902	13.39	43.34
903	16.05	47.04

UNITY

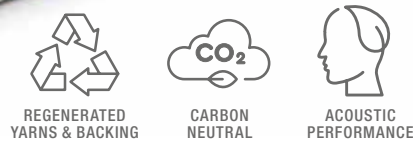
COLOUR	LRV _{av}	L
203	14.97	45.59
302	7.78	33.52
504	8.49	34.97
603	6.95	31.70
904	11.86	41.00
905	8.41	34.83

RECYCLED CONTENT

The TRINITY collection redefines carpet tiles with a focus on sustainability and comfort. Made with ECONYL® Regenerated Yarn from discarded fishing nets and a RELAX Cushion Backing crafted from recycled mattresses, **these tiles turn waste into high-quality materials.** Carrying the CO2 Neutral Label, TRINITY reflects a commitment to reducing environmental impact.

Beyond eco-consciousness, the RELAX Cushion Backing ensures **superior softness and acoustic performance**, creating quieter, more comfortable spaces ideal for collaboration and focus.

TRINITY combines sustainability with luxury for a greener, calmer future.



BLOQ

creative
carpet tiles



THE TRINITY 'RELAX' ASSEMBLY, SENSITY & UNITY

SPECIFICATIONS

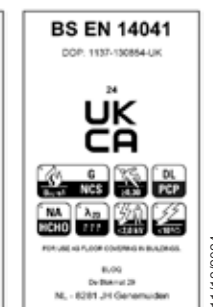
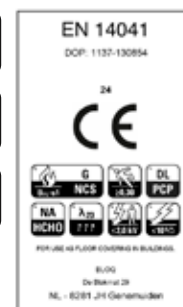
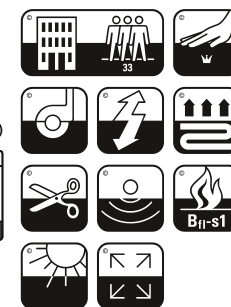
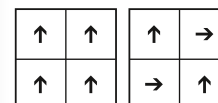
TYPE OF MANUFACTURE	Tufted Patterned Loop Pile 1/10" ISO 2424
PILE FIBER COMPOSITION	ECONYL® ISO 2424 100% Regenerated Nylon
SECONDARY BACKING	RELAX Cushion Backing ISO 2424 100% Recycled Content
DIMENSION	50 x 50 cm EN ISO 24342
PILE WEIGHT	650 g/m² ISO 8543
SURFACE PILE WEIGHT	350 g/m² ISO 8543
TOTAL WEIGHT	4 000 g/m² ISO 8543
TOTAL THICKNESS	9.5 mm ISO 1765
PILE HEIGHT	2.3 mm ISO 1766
PILE DENSITY	0.152 g/m³ ISO 8543
NUMBER OF TUFTS	208 000 /m² ISO 1763
DIMENSIONAL STABILITY	≤ 0.2% ISO 2551
NUMBER OF COLOURS	ASSEMBLY: 6 SENSITY: 4 UNITY: 6
PACKAGING	Box: 16 tiles / 4 m² Pallet: 160 m²

PERFORMANCE

CLASSIFICATION	33 EN 1307
LUXURY RATING	LC1 EN 1307
CASTOR CHAIR RATING	A: Intensive use EN 985
FIRE CLASSIFICATION	B _{f1} -s1 EN 13501-1
IMPACT SOUND INSULATION	ΔL _w : 31 dB EN ISO 10140-3
SOUND ABSORPTION	Frequency Hz 125 250 500 1000 2000 4000 EN ISO 354 α _s 0.00 0.05 0.35 0.25 0.30 0.40
NOISE REDUCTION	α _w : 0.30 EN ISO 354
PERMANENT ANTISTATIC	≤ 2 kV ISO 6356
THERMAL RESISTANCE	0.155 m²K/W ISO 8302
COLOUR FASTNESS TO LIGHT	≥ 5-6 EN ISO 105-B02
COLOUR FASTNESS TO WATER	≥ 4 EN ISO 105-E01
RUBBING FASTNESS	≥ 4 EN ISO 105-X12
GUT N° PRODIS	6CF1F75D



THE TRINITY collection is also available with Bitumen Backing. For the 'BITBACK' technical data sheet, please visit our website: <https://bloq.nl/downloads>



11/12/2024

