

—
BLOQ

creative
carpet tiles



THE TEXTURED
POS&NEG

Part of The Textured

The Textured collection plays with soft tones and textures. Its tactile look is inspired by coarsely woven fabrics such as linen. As part of The Textured collection, POS&NEG features an organic and arrhythmic play of contrast, on 50 x 50 cm tiles.



Textures



Contrast



Tactility



THE TEXTURED
POS&NEG



Inspiration
is everywhere

Play of contrast

The design of POS&NEG is inspired by the bark of a tree. Positive and negative come together in a playful yet elegant combo of light and dark. The collection is composed of soft pastel colours in two opposite shades: POS and its mirror image NEG.



*Experience
the beauty
of bark*



POS 816 NUT



NEG 817 PINE



©Painting: Poukés Halpern

NEG 817, POS 816



POS 231, NEG 232



©Painting: Pouk Halpern

NEG 232



POS 231 TEA

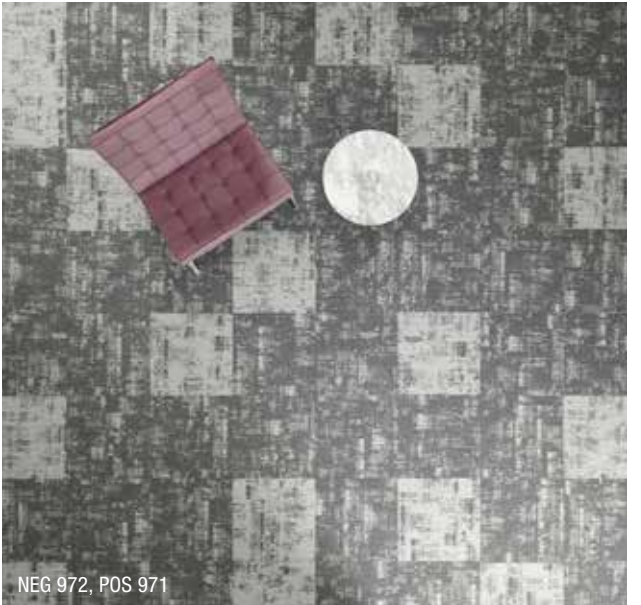


NEG 232 PEAR



©Painting: Pouke Halpern

POS 971



NEG 972, POS 971

Apart or together

POS and NEG are statement designs on their own, but equally strong when combined. Just like Yin and Yang. Combine them cleverly to create a balanced result. In a checkerboard or running bond pattern, for a sense of duality that adds dimension to your floor design.



POS 971 GRIT



NEG 972 FOG



POS 626 FENNEL



NEG 627 ROSEMARY



©Painting: Fouké Halpern

POS 626, NEG 627

Colour range

Ranging from warm to cold, but natural above all: the collection features eight soft pastel colours and darker shades. Each in POS and NEG versions. The bark-inspired tiles match perfectly with designs from the rest of The Textured collection, such as these tones from CANVAS.



POS 221 SALMON NEG 222 PEACH



CANVAS 220 MELON

Matching Canvas tones
←



POS 226 CORN NEG 227 DUNE



CANVAS 225 AMBER



POS 231 TEA NEG 232 PEAR



CANVAS 230 LIME



POS 816 NUT NEG 817 PINE



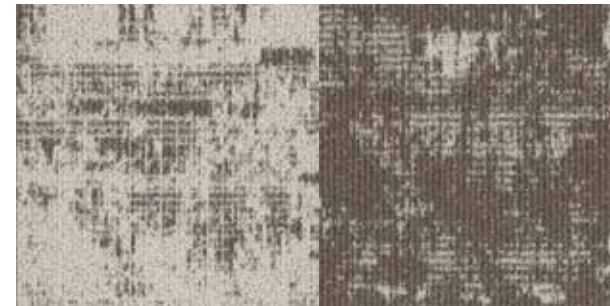
CANVAS 815 OLIVE



POS 626 FENNEL NEG 627 ROSEMARY



CANVAS 625 SAGE



POS 821 CELERY NEG 822 CEDAR



CANVAS 820 TIMBER



POS 980 SILT NEG 981 FOSSIL



CANVAS 935 SLATE



POS 971 GRIT NEG 972 FOG



CANVAS 970 STORM



POS 221, NEG 222, CANVAS 220



POS 221, NEG 222, CANVAS 220

Dare to mix

Any combination with CANVAS makes for a striking, interesting and varied result. Be as bold as you like. You can incorporate a multitude of CANVAS tiles for a rather serene effect, while a majority of POS&NEG tones will produce an entirely different look. The possibilities are endless.



POS 221 SALMON



NEG 222 PEACH



CANVAS 220 MELON



NEG 981



POS 980 SILT



NEG 981 FOSSIL



©Painting: Pouke Halpern

POS 980, NEG 981



POS 821, NEG 822, CANVAS 820



©Painting: Poulkó Halpern

POS 821, NEG 822, CANVAS 820



POS 821 CELERY



NEG 822 CEDAR



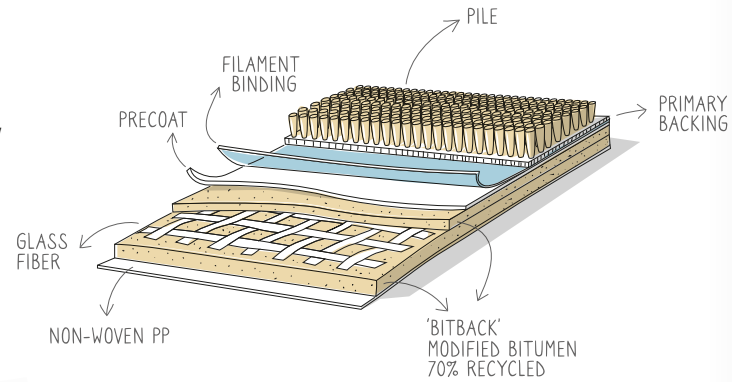
CANVAS 820 TIMBER

Highlights

DIMENSIONAL STABILITY & HIGH PERFORMANCE

BLOQ uses **glass fiber fleece**, which gives more dimensional stability ($\leq 0.2\%$). The **durable quality** is guaranteed by multiple certifications:

- Commercial heavy classification (Class 33 - EN 1307)
- Suitable for castor chairs (EN 985)
- Colour fastness to light (EN ISO 105-B02)



SOLUTION DYED YARNS

BLOQ uses 100% Polyamide 6 Solution Dyed Nylon from **Aquafil**, the best and leading supplier for carpet manufacturers. Solution dyed means **better colour fastness** and the best results to light and water.



LIGHT REFLECTANCE VALUES

Light Reflectance Value (LRV) is a scale that measures visible and usable light reflected from an illuminated surface. The percentage identifies how much light a colour reflects or absorbs. 0% reflects no visible light, 100% reflects all light.

POS	LRV _{av}	L
971	41.61	70.60
221	40.70	69.97
226	38.48	68.37
231	40.28	69.67
980	40.68	69.95
821	36.95	67.24
816	34.39	65.27
626	39.78	69.31

NEG	LRV _{av}	L
972	23.48	55.57
222	23.69	55.78
227	24.28	56.36
232	20.73	52.66
981	15.57	46.42
822	17.54	48.93
817	20.89	52.83
627	20.06	51.90



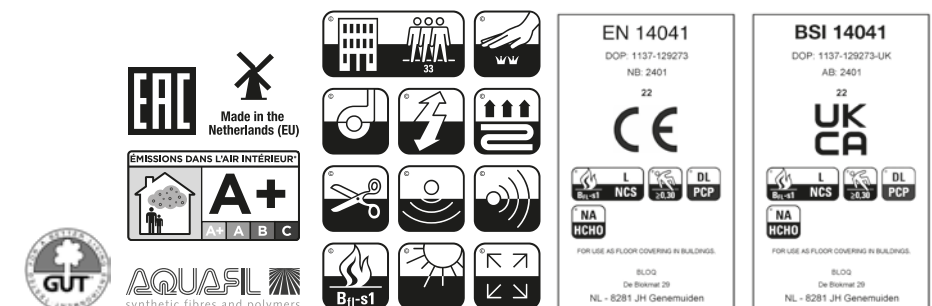
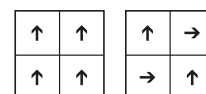
THE TEXTURED POS&NEG

SPECIFICATIONS

TYPE OF MANUFACTURE	Tufted Patterned Loop Pile 1/10"
ISO 2424	
PILE FIBER COMPOSITION	100% Polyamide 6 Solution Dyed Nylon made by Aquafil
ISO 2424	
SECONDARY BACKING	Bitback, Modified Bitumen 70% Recycled Content
ISO 2424	
DIMENSION	50 x 50 cm
EN ISO 24342	
PILE WEIGHT	750 g/m ²
ISO 8543	
SURFACE PILE WEIGHT	550 g/m ²
ISO 8543	
TOTAL WEIGHT	4 400 g/m ²
ISO 8543	
TOTAL THICKNESS	7.4 mm
ISO 1765	
PILE HEIGHT	4.3 mm
ISO 1766	
PILE DENSITY	0.128 g/m ³
ISO 8543	
NUMBER OF TUFTS	152 700 /m ²
ISO 1763	
DIMENSIONAL STABILITY	$\leq 0.2\%$
ISO 2551	
NUMBER OF COLOURS	16
PACKAGING	Box: 20 tiles / 5 m ² Pallet: 200 m ²

PERFORMANCE

CLASSIFICATION	33
EN 1307	
LUXURY RATING	LC2
EN 1307	
CASTOR CHAIR RATING	A: Intensive use
EN 985	
FIRE CLASSIFICATION	B _{f1} -s1
EN 13501-1	
IMPACT SOUND INSULATION	ΔL_w : 28 dB
EN ISO 10140-3	
SOUND ABSORPTION	Frequency Hz 125 250 500 1000 2000 4000
EN ISO 354	α_s 0.00 0.05 0.10 0.20 0.40 0.50
NOISE REDUCTION	α_w : 0.20
EN ISO 354	
PERMANENT ANTISTATIC	≤ 2 kV
ISO 6356	
TRANSVERSAL RESISTANCE	$\leq 1 \times 10^9$ Ohm
ISO 10965	
THERMAL RESISTANCE	0.085 m ² /K/W
ISO 8302	
COLOUR FASTNESS TO LIGHT	≥ 7
EN ISO 105-B02	
COLOUR FASTNESS TO WATER	≥ 4
EN ISO 105-E01	
RUBBING FASTNESS	≥ 4
EN ISO 105-X12	
GUT N° PRODIS	BC5AB0C0



All rights reserved to alter technical specifications.



Part of **betap**[®]

www.bloq.nl